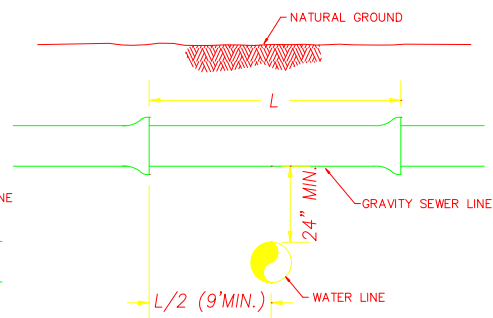


1. SEWER LINE MUST BE PRESSURE CLASS 150 OR GREATER.
2. IF THE WATER LINE IS DAMAGED OR LEAKING IT SHALL BE REPLACED AT LEAST NINE FEET HORIZONTALLY FROM THE SEWER LINE (18 FEET TOTAL) WITH PRESSURE CLASS 150 OR GREATER PIPE.
3. WHENEVER POSSIBLE THE JOINTS OF THE GRAVITY SEWER LINE SHALL BE AT LEAST 9 FEET FROM THE WATER LINE.

NEW GRAVITY SEWER LINES CROSSING UNDER EXISTING WATER LINES



1. SEWER LINE MUST BE PRESSURE CLASS 150 OR GREATER.
2. IF THE WATER LINE IS DAMAGED OR LEAKING IT SHALL BE REPLACED AT LEAST NINE FEET HORIZONTALLY FROM THE WATER LINE (18 FEET TOTAL) WITH PRESSURE CLASS 150 OR GREATER PIPE.
3. WHENEVER POSSIBLE THE JOINTS OF THE GRAVITY SEWER LINE SHALL BE AT LEAST 9 FEET FROM THE WATER LINE.

NEW GRAVITY SEWER LINES CROSSING OVER EXISTING WATER LINES

## WATER LINE & SEWER LINE CROSSINGS